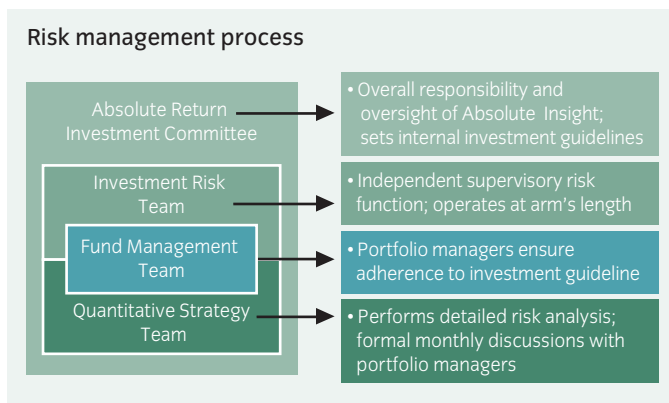


Monitoring risk

FOR INVESTMENT PROFESSIONALS ONLY. NOT FOR ONWARD DISTRIBUTION.

Insight has developed a robust and integrated risk management process for the Absolute Insight fund range. Overall responsibility and oversight lies with the Absolute Return Investment Committee (ARIC), chaired by Reza Vishkai, Head of Specialist Investments.



- The **ARIC** is responsible for setting internal risk and investment guidelines. This committee meets monthly to review performance, risk levels and policy within the Fund.
- Insight's **Risk Management Team** has a supervisory function. The Team is responsible for ensuring compliance with the relevant risk limits and for initiating action in the case of a breach.
- The **Quantitative Strategy Team** analyses non trivial biases and sensitivities at the portfolio level, risk concentrations, and ad-hoc measures depending on the market environment using a wide range of quantitative approaches.
- Each of the **Fund Management Teams** is responsible for running their underlying strategies within their set limits.

ARIC: Absolute Return Investment Committee



This document is only directed at investors resident in jurisdictions where our funds are registered. It is not an offer or invitation to persons outside of those jurisdictions. Insight Investment reserves the right to reject any applications from outside of such jurisdictions. Issued by Insight Investment Management (Global) Limited. Registered office 160 Queen Victoria Street, London EC4V 4LA. Registered in England and Wales. Registered number 827982. Authorised and regulated by the Financial Services Authority.